



The Drive Rochford

£1,900 PCM

****NEW BUILD**** APS have the pleasure of offering this well-presented 3 bedroom detached house located within walking distance of Rochford train station and local amenities. The property boasts a modern kitchen diner with appliances (cooker/hob, dishwasher and washing machine) as well as a spacious living room and a ground floor cloakroom. To the first floor there are three well-proportioned bedrooms, ensuite to the master bedroom and a contemporary bathroom with shower over bath. Other benefits include garden with a patio laid to lawn, off-street parking for several cars, double glazing and air source heat pump heating. Available 1st April 2026. Council Tax band C

- NEW BUILD
- 3 BEDROOM DETACHED HOUSE
- KITCHEN DINER
- GROUND FLOOR CLOAKROOM
- EN-SUITE TO MASTER BEDROOM
- OFF STREET PARKING WITH CHARGING POINT
- CLOSE TO SOUTHEND AIRPORT

Viewing

Please contact our Alternative Property Services Limited Office on 01708 454121

if you wish to arrange a viewing appointment for this property or require further information.

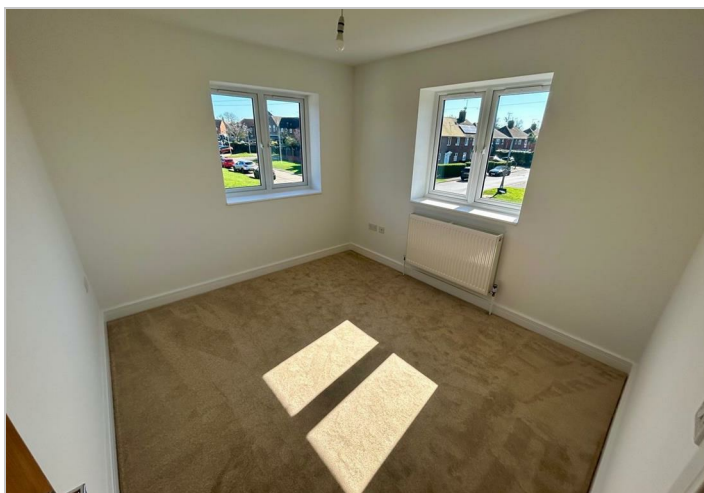
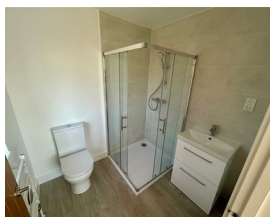
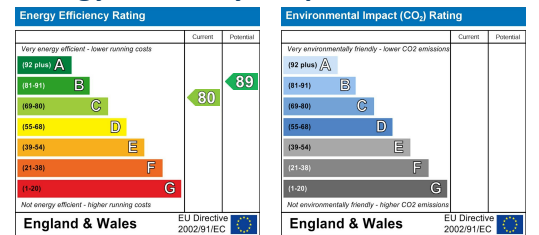




Area Map



Energy Efficiency Graph



These particulars, whilst believed to be accurate are set out as a general outline only for guidance and do not constitute any part of an offer or contract. Intending purchasers should not rely on them as statements of representation of fact, but must satisfy themselves by inspection or otherwise as to their accuracy. No person in this firm's employment has the authority to make or give any representation or warranty in respect of the property.

4 North Street, Hornchurch, Essex, RM11 1QX

Tel: 01708 454121 Email: lettings@alternativepropertyservices.co.uk <https://www.alternativepropertyservices.co.uk>