



Gumley Close Grays

£1,600 PCM

APS have pleasure in offering this 2-bedroom house ideally located for access to Lakeside shopping centre, train stations and major road links. The property boasts a modern fitted kitchen with appliances (including washing machine, dishwasher, fridge-freezer, oven & hob), a contemporary bathroom suite with shower over bath, spacious lounge and two double bedrooms. Other benefits include a ground floor cloakroom, double glazing, gas central heating, garden with patio laid to lawn and off-street parking. Available 16th January 2026. Council Tax Band C.

- TWO DOUBLE BEDROOMS
- MODERN FITTED KITCHEN
- CONTEMPORARY FAMILY BATHROOM
- DOUBLE GLAZING
- GROUND FLOOR CLOAKROOM
- GARDEN
- OFF STREET PARKING

Viewing

Please contact our Alternative Property Services Limited Office on 01708 454121 if you wish to arrange a viewing appointment for this property or require further information.

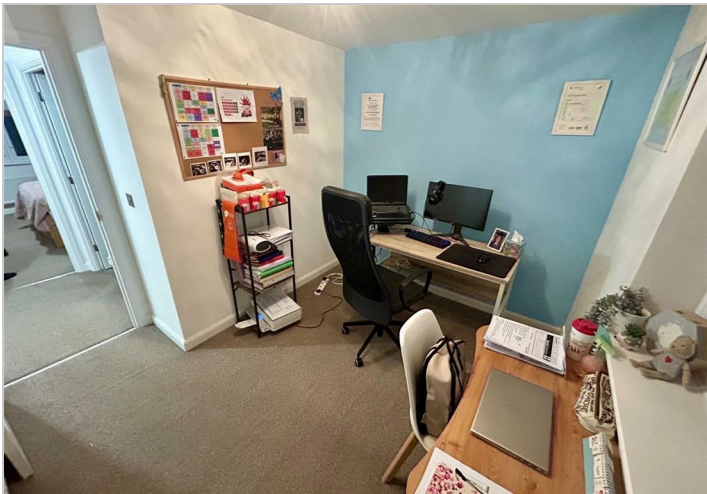
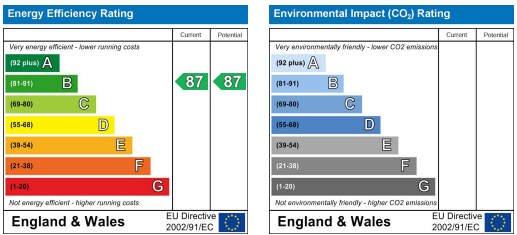




Area Map



Energy Efficiency Graph



These particulars, whilst believed to be accurate are set out as a general outline only for guidance and do not constitute any part of an offer or contract. Intending purchasers should not rely on them as statements of representation of fact, but must satisfy themselves by inspection or otherwise as to their accuracy. No person in this firm's employment has the authority to make or give any representation or warranty in respect of the property.