



Tavistock Close Romford

£1,800 PCM

APS have pleasure in offering this 2 double bedroom house which is located within easy access of Harold Wood and Romford Town Centre. The property boasts a modern fitted kitchen with appliances (including fridge-freezer, washing machine, oven & hob), lounge and a contemporary family bathroom with shower over bath. Other benefits include double glazing, gas central heating, new flooring throughout, built in wardrobes to the master bedroom, garden with patio laid to lawn, garage and off-street parking. Available 12th September 2025. Council Tax Band C.

- 2 DOUBLE BEDROOMS
- FITTED KITCHEN WITH APPLIANCES
- NEW FLOORING THROUGHOUT
- GAS CENTRAL HEATING
- DOUBLE GLAZING
- FRESHLY PAINTED
- OFF STREET PARKING
- GARAGE

Viewing

Please contact our Alternative Property Services Limited Office on 01708 454121 if you wish to arrange a viewing appointment for this property or require further information.

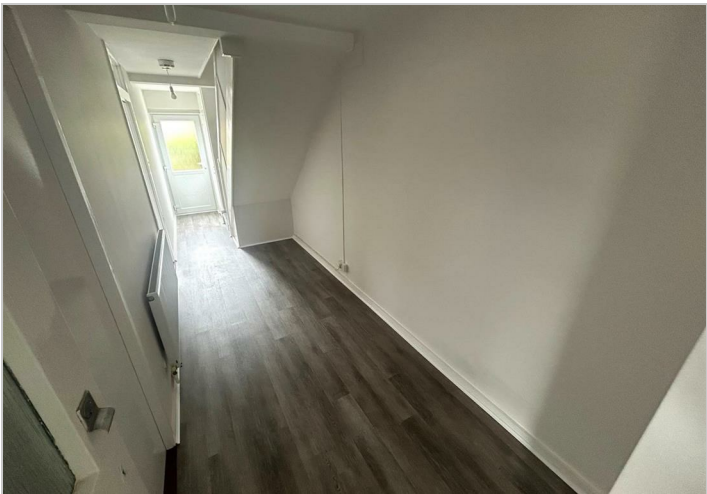
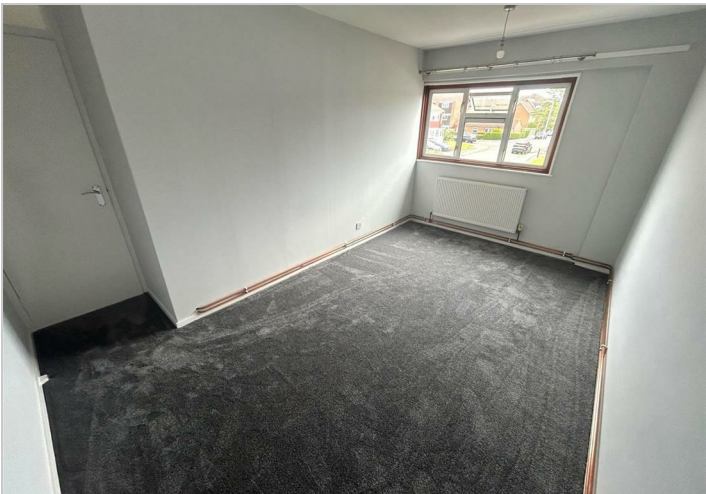
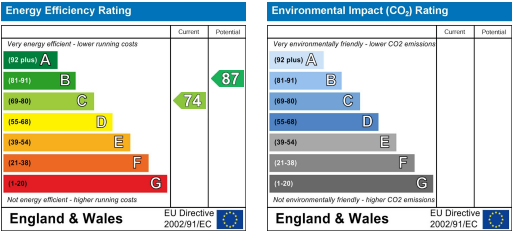




Area Map



Energy Efficiency Graph



These particulars, whilst believed to be accurate are set out as a general outline only for guidance and do not constitute any part of an offer or contract. Intending purchasers should not rely on them as statements of representation of fact, but must satisfy themselves by inspection or otherwise as to their accuracy. No person in this firms employment has the authority to make or give any representation or warranty in respect of the property.