

## Emerson House Hornchurch

**£1,700 PCM**

APS have pleasure in offering this 2 DOUBLE bedroom top floor apartment located within walking distance of several bars, restaurants, and Hornchurch town centre with all its amenities. The property boasts a modern fitted kitchen with appliances (washing machine, dishwasher & fridge freezer), large through lounge with Juliet balcony, en-suite shower-room / W.C. and a family bathroom with a shower over bath. Other benefits include built in wardrobes to both bedrooms, neutral décor throughout, double glazing and secure underground parking with lift access to the apartment. Available 16th August 2025. Council Tax Band D

- 2 DOUBLE BEDROOMS
- LIFT ACCESS
- DOUBLE GLAZING
- FITTED KITCHEN
- UNDERGROUND PARKING
- CLOSE TO GIDEA PARK & EMERSON PARK TRAIN STATIONS
- JULIET BALCONY

### Viewing

Please contact our Alternative Property Services Limited Office on 01708 454121 if you wish to arrange a viewing appointment for this property or require further information.



2



2



1



D

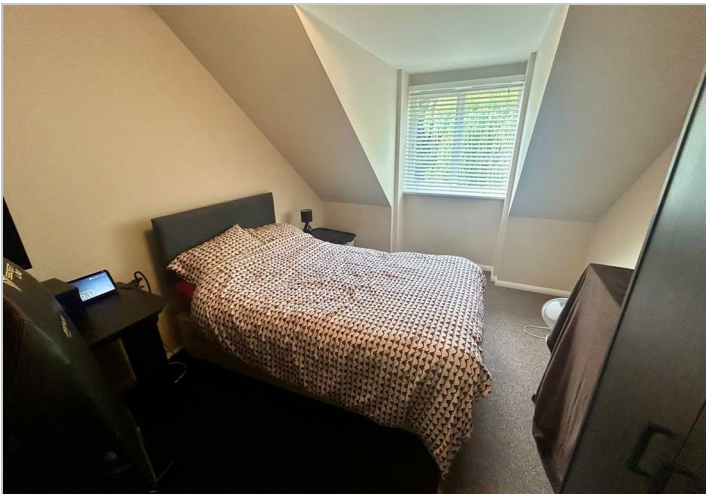
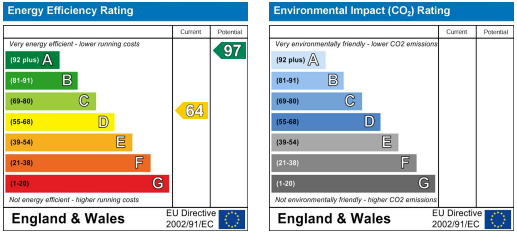




Area Map



Energy Efficiency Graph



These particulars, whilst believed to be accurate are set out as a general outline only for guidance and do not constitute any part of an offer or contract. Intending purchasers should not rely on them as statements of representation of fact, but must satisfy themselves by inspection or otherwise as to their accuracy. No person in this firms employment has the authority to make or give any representation or warranty in respect of the property.