



## Ardleigh Green Road Hornchurch

**£1,550 PCM**

APS have pleasure in offering this ground floor 2-bedroom apartment which is located close to Gidea Park Train Station with its excellent link to London (Elizabeth Line). The property boasts a modern fitted kitchen with appliances (cooker, washing machine, fridge & freezer) and a contemporary bathroom suite with shower over bath. Other benefits include neutral décor throughout, double glazing, gas central heating, own garden and off-street parking. Available 11th July 2025. Council Tax Band C.

- **FITTED KITCHEN**
- **CONTEMPORARY BATHROOM**
- **DOUBLE GLAZING**
- **GAS CENTRAL HEATING**
- **CLOSE TO STATION**
- **PARKING**
- **OWN GARDEN**

### Viewing

Please contact our Alternative Property Services Limited Office on 01708 454121 if you wish to arrange a viewing appointment for this property or require further information.



2



1



1



C

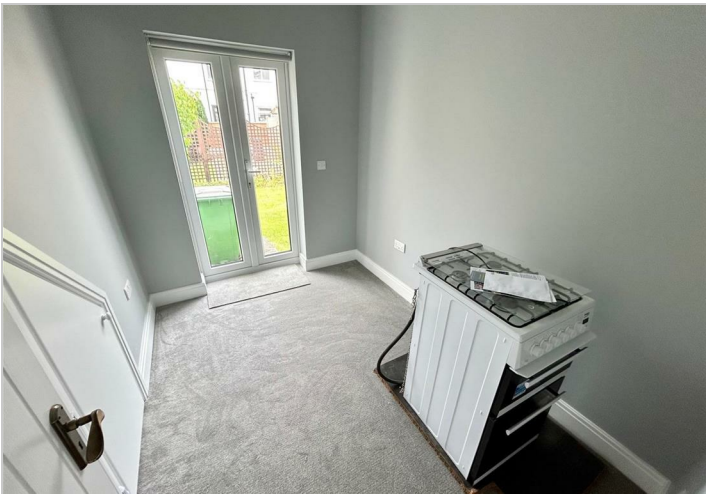
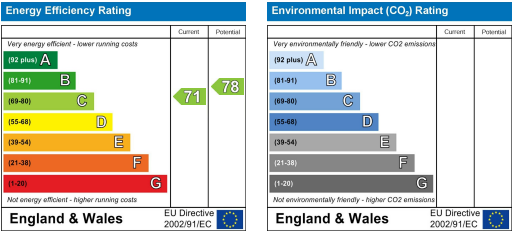




Area Map



Energy Efficiency Graph



These particulars, whilst believed to be accurate are set out as a general outline only for guidance and do not constitute any part of an offer or contract. Intending purchasers should not rely on them as statements of representation of fact, but must satisfy themselves by inspection or otherwise as to their accuracy. No person in this firms employment has the authority to make or give any representation or warranty in respect of the property.