



Wellington House Gidea Park

£1,250 PCM

APS have pleasure in offering this immaculately presented 1 double bedroom 2nd floor apartment which is located within a short walk of Gidea Park Station. The property boasts a modern white fitted kitchen with integrated appliances (dishwasher, fridge freezer, washer dryer, electric oven, gas hob), a contemporary white bathroom suite with a shower over bath and a double bedroom with modern wardrobes. Other benefits include gas central heating, double glazed, laminated wood flooring throughout, modern lighting and allocated parking. Available 5th August 2025. Council Tax Band C.

- **FITTED KITCHEN WITH INTEGRATED APPLIANCES**
- **GAS CENTRAL HEATING**
- **CLOSE TO STATION**
- **DOUBLE GLAZING**
- **ALLOCATED PARKING**

Viewing

Please contact our Alternative Property Services Limited Office on 01708 454121 if you wish to arrange a viewing appointment for this property or require further information.

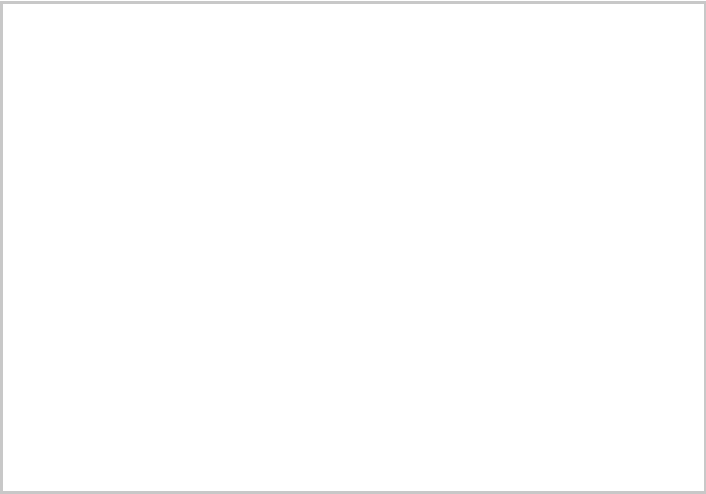
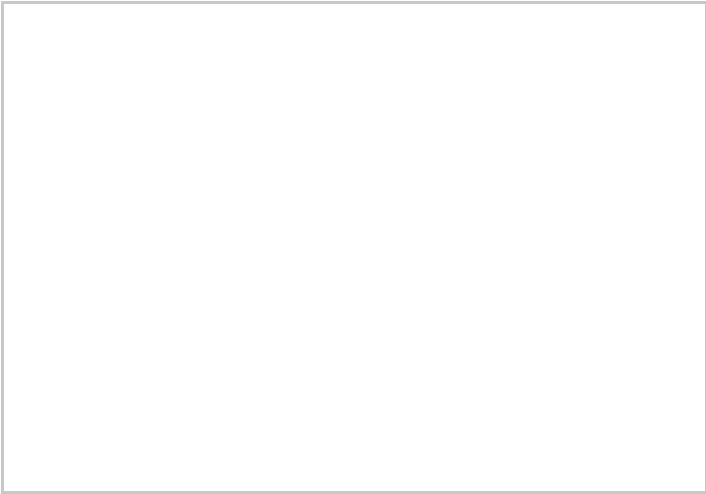
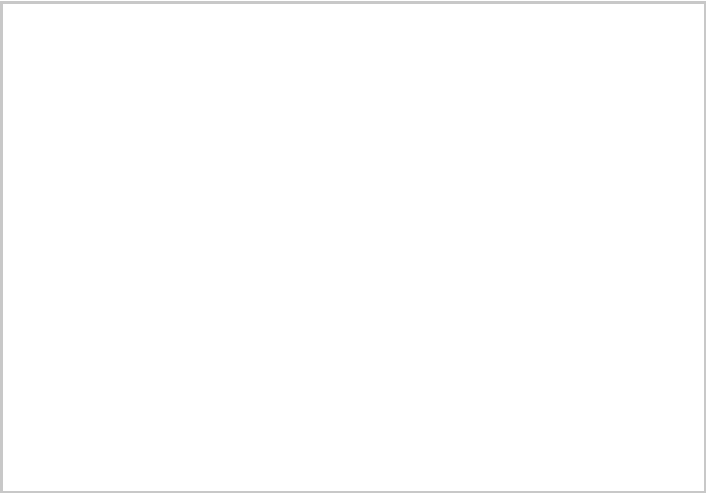
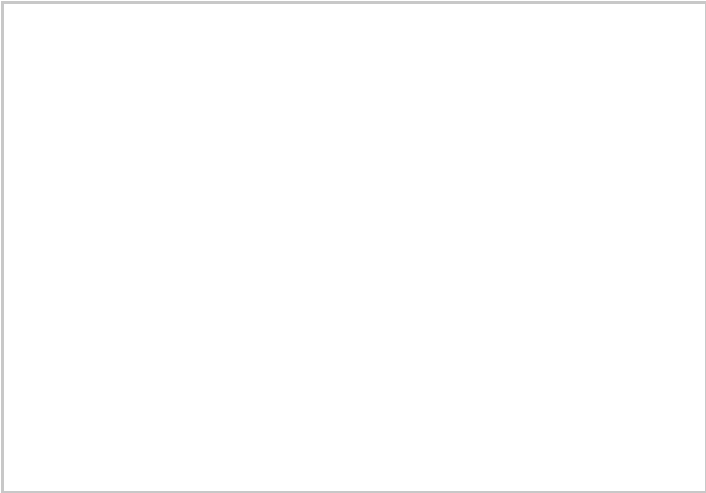
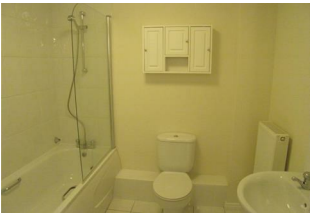
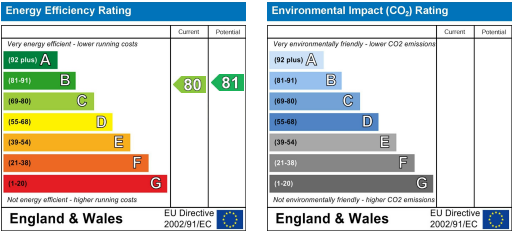




Area Map



Energy Efficiency Graph



These particulars, whilst believed to be accurate are set out as a general outline only for guidance and do not constitute any part of an offer or contract. Intending purchasers should not rely on them as statements of representation of fact, but must satisfy themselves by inspection or otherwise as to their accuracy. No person in this firms employment has the authority to make or give any representation or warranty in respect of the property.