



## Station Lane Hornchurch

**£1,500 PCM**

APS have pleasure in offering this 2-bedroom top floor flat which is decorated to a high standard and is located within a short walk to Hornchurch Station. The property boasts a modern fitted kitchen, spacious lounge, contemporary bathroom suite with shower over bath and two DOUBLE bedrooms. Other benefits include gas central heating, double glazing and allocated parking. Available 22nd April 2025. Council Tax Band B.

- TWO DOUBLE BEDROOMS
- FITTED KITCHEN
- SPACIOUS LOUNGE
- GAS CENTRAL HEATING
- CLOSE TO STATION
- PARKING

### Viewing

Please contact our Alternative Property Services Limited Office on 01708 454121 if you wish to arrange a viewing appointment for this property or require further information.



2



1



1



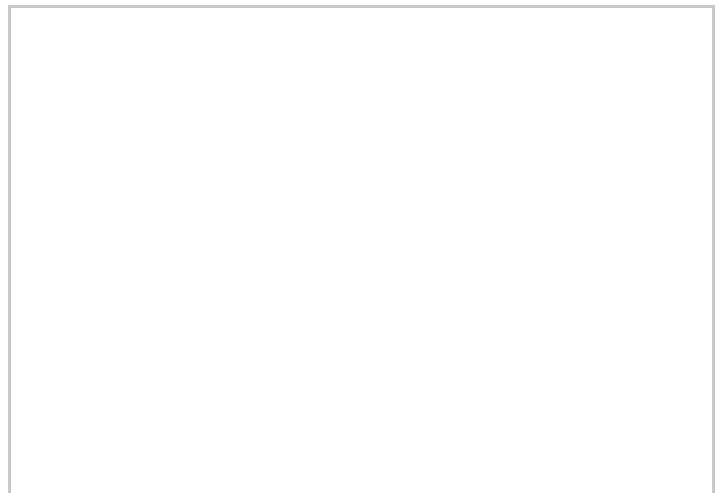
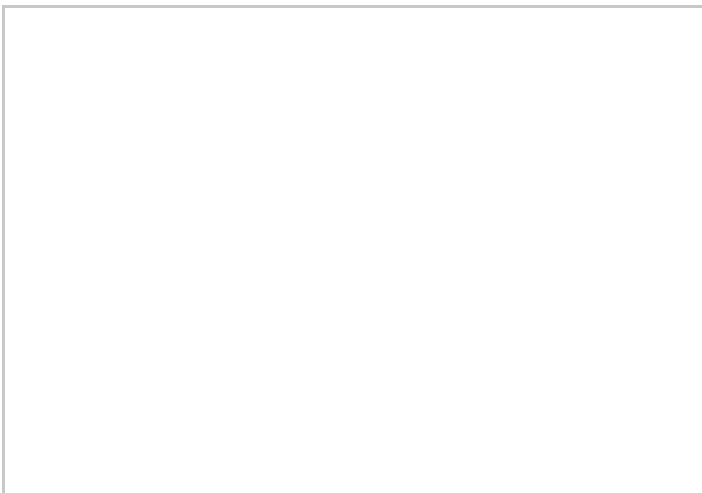
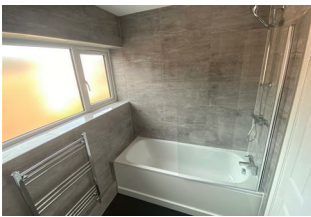
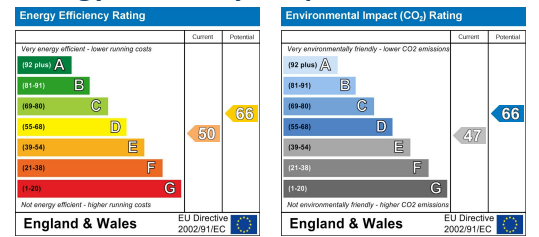
E



### Area Map



### Energy Efficiency Graph



These particulars, whilst believed to be accurate are set out as a general outline only for guidance and do not constitute any part of an offer or contract. Intending purchasers should not rely on them as statements of representation of fact, but must satisfy themselves by inspection or otherwise as to their accuracy. No person in this firm's employment has the authority to make or give any representation or warranty in respect of the property.

4 North Street, Hornchurch, Essex, RM11 1QX

Tel: 01708 454121 Email: [lettings@alternativepropertyervices.co.uk](mailto:lettings@alternativepropertyervices.co.uk) <https://www.alternativepropertyervices.co.uk>