



## Somerville Road Romford

**£1,250 PCM**

APS have pleasure in offering this 1-bedroom top floor flat which has been decorated and finished to a high standard. The property boasts a high gloss kitchen, a contemporary white bathroom suite with shower cubicle and a large storage / office space. Other benefits include double glazing, gas central heating and off-street parking. Available 29th November 2024. Council Tax Band A.

- MODERN FITTED KITCHEN
- OPEN-PLAN LIVING
- OFFICE / STORAGE SPACE
- DOUBLE GLAZING
- GAS CENTRAL HEATING
- OFF STREET PARKING

### Viewing

Please contact our Alternative Property Services Limited Office on 01708 454121 if you wish to arrange a viewing appointment for this property or require further information.



1



1



1



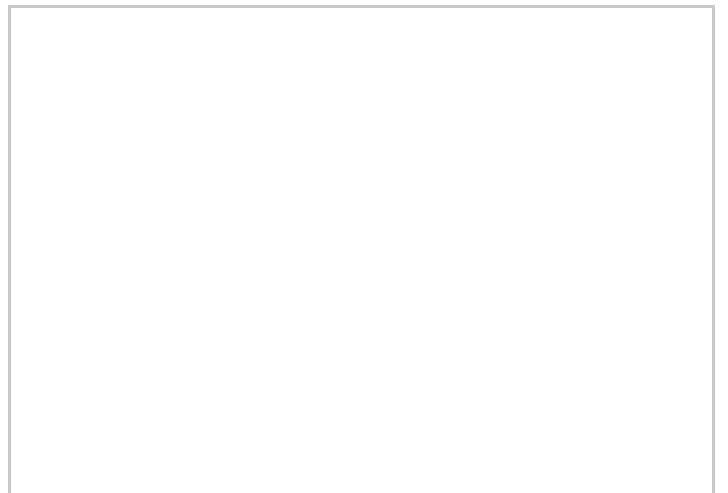
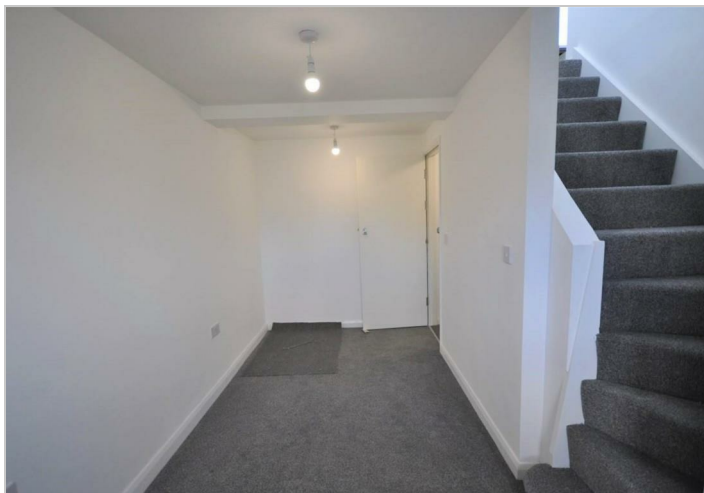
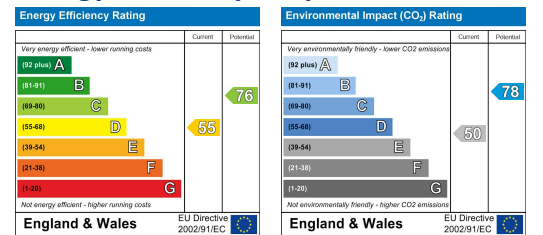
D



## Area Map



## Energy Efficiency Graph



These particulars, whilst believed to be accurate are set out as a general outline only for guidance and do not constitute any part of an offer or contract. Intending purchasers should not rely on them as statements of representation of fact, but must satisfy themselves by inspection or otherwise as to their accuracy. No person in this firm's employment has the authority to make or give any representation or warranty in respect of the property.

4 North Street, Hornchurch, Essex, RM11 1QX

Tel: 01708 454121 Email: [lettings@alternativepropertyervices.co.uk](mailto:lettings@alternativepropertyervices.co.uk) <https://www.alternativepropertyervices.co.uk>