



The Railstore, Kidman Close Romford

£1,550 PCM

APS have pleasure in offering this 2 bedroom luxury conversion in the Railstore Development. The property is split over two levels and boasts to the ground floor a fully fitted kitchen with appliances (including dishwasher, washing machine, fridge-freezer, oven & hob), lounge and ground floor cloakroom. To the first floor there are two double bedrooms, fitted wardrobes to the second bedroom and a contemporary bathroom with shower over bath. Other benefits include gas central heating, double glazing, exposed brick feature walls and allocated parking. Available 30th November 2024. Council Tax Band D.

- TWO DOUBLE BEDROOM
- FITTED KITCHEN WITH APPLIANCES
- SPLIT LEVEL
- GAS CENTRAL HEATING
- DOUBLE GLAZING
- GROUND FLOOR CLOAKROOM
- ALLOCATED PARKING

Viewing

Please contact our Alternative Property Services Limited Office on 01708 454121 if you wish to arrange a viewing appointment for this property or require further information.

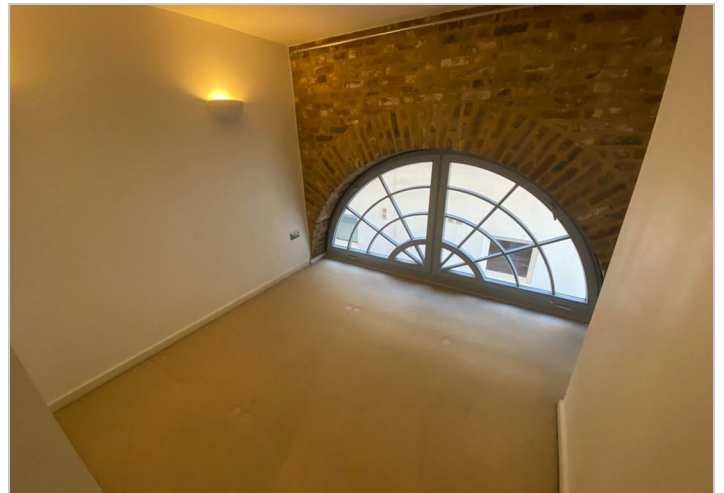
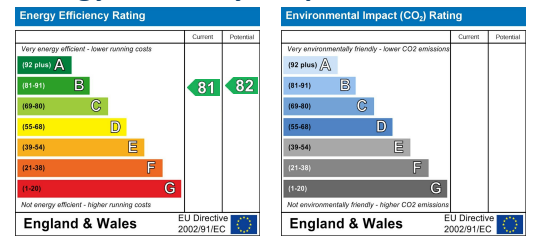




Area Map



Energy Efficiency Graph



These particulars, whilst believed to be accurate are set out as a general outline only for guidance and do not constitute any part of an offer or contract. Intending purchasers should not rely on them as statements of representation of fact, but must satisfy themselves by inspection or otherwise as to their accuracy. No person in this firm's employment has the authority to make or give any representation or warranty in respect of the property.

4 North Street, Hornchurch, Essex, RM11 1QX

Tel: 01708 454121 Email: lettings@alternativepropertyervices.co.uk <https://www.alternativepropertyervices.co.uk>