



Grey Towers Gardens Essex

£1,200 PCM

APS have pleasure in offering well-presented 2 bedroom 1st floor maisonette in a quiet cul-de-sac. The property is located just a short walk from Emerson Park Station and Hornchurch High street and is within easy access of Hornchurch Station. The property consists of 1 large double bedroom with made to measure wardrobes, 1 small double with storage cupboard, large open plan kitchen/living room and modern fully tiled bathroom with shower over bath. The property also benefits from low maintenance private garden with pavilion shed and electric supply, integrated washing machine, private entrance /stairway, gas central heating and full double glazing. Street Parking. Council Tax Band C. Available 16th October 2021.

- CLOSE TO HIGH STREET & STATION
- OWN GARDEN
- GAS CENTRAL HEATING
- DOUBLE GLAZING
- FITTED KITCHEN
- BATHROOM WITH SHOWER OVER BATH

Viewing

Please contact our Alternative Property Services Limited Office on 01708 454121

if you wish to arrange a viewing appointment for this property or require further information.



2



1



1



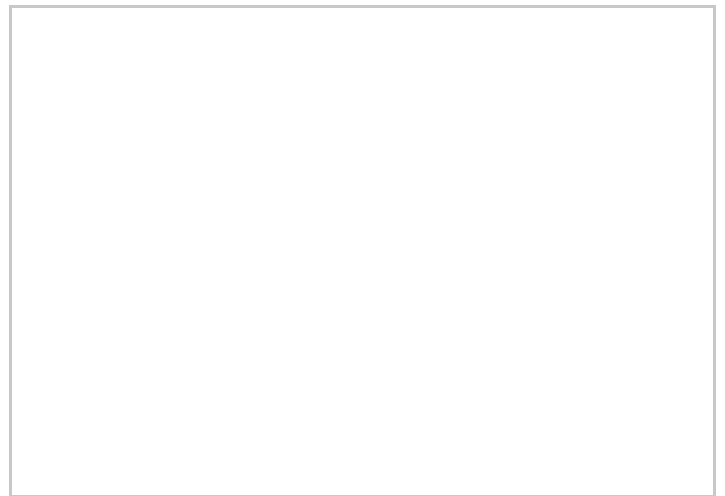
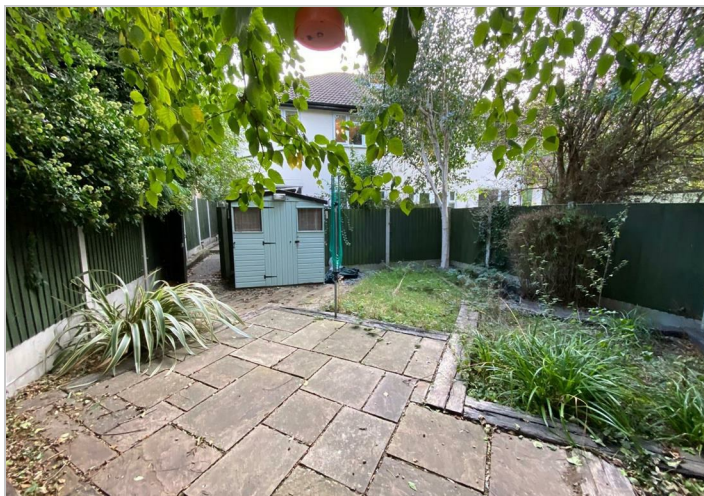
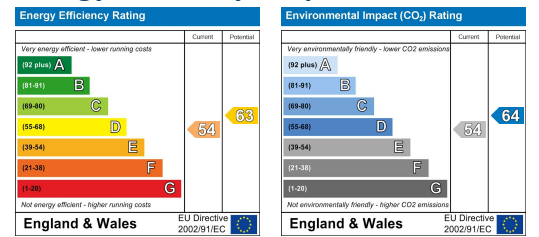
E



Area Map



Energy Efficiency Graph



These particulars, whilst believed to be accurate are set out as a general outline only for guidance and do not constitute any part of an offer or contract. Intending purchasers should not rely on them as statements of representation of fact, but must satisfy themselves by inspection or otherwise as to their accuracy. No person in this firm's employment has the authority to make or give any representation or warranty in respect of the property.

4 North Street, Hornchurch, Essex, RM11 1QX

Tel: 01708 454121 Email: lettings@alternativepropertyervices.co.uk www.alternativepropertyervices.co.uk