



## 49 The Jonathans Chaplaincy Gardens , Hornchurch, RM11 3SH

**£1,250 PCM**

APS have pleasure in offering this spacious 2 double bedroom first floor flat which is located within walking distance of Upminster Bridge Station and Hornchurch Town Centre. The property has been refurbished throughout and boasts a modern fitted high gloss kitchen with appliances (washing machine, fridge freezer, oven & hob) spacious lounge, contemporary white bathroom suite with shower over bath and two double bedrooms. Other benefits include laminated wood flooring, double glazing, modern energy saving electric radiators, modern lighting, neutral decor with blinds to match and garage. Available 28th May 2021.

- REFURBISHED THROUGHOUT
- WALKING DISTANCE TO STATION
- TWO DOUBLE BEDROOMS
- FITTED KITCHEN WITH APPLIANCES
- DOUBLE GLAZING
- BATHROOM WITH SHOWER OVER BATH

### Viewing

Please contact our Alternative Property Services Limited Office on 01708 454121 if you wish to arrange a viewing appointment for this property or require further information.

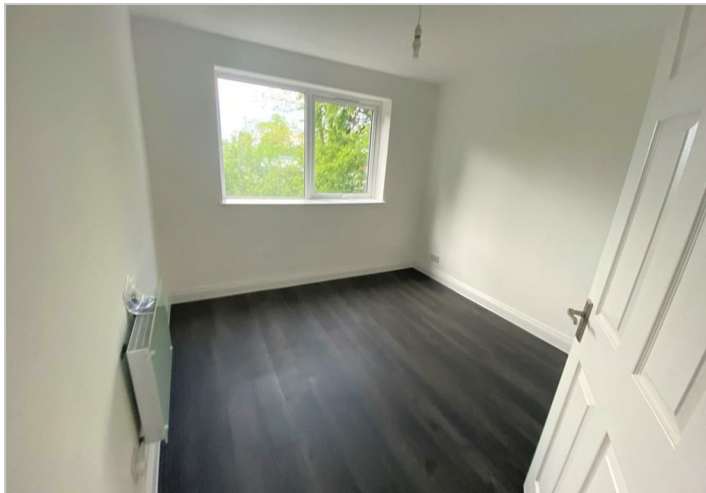
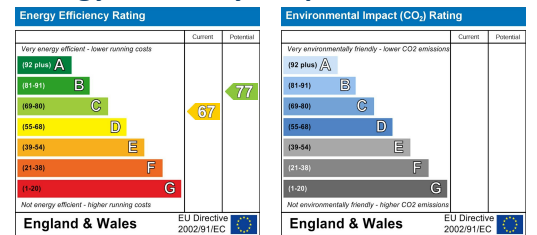




## Area Map



## Energy Efficiency Graph



These particulars, whilst believed to be accurate are set out as a general outline only for guidance and do not constitute any part of an offer or contract. Intending purchasers should not rely on them as statements of representation of fact, but must satisfy themselves by inspection or otherwise as to their accuracy. No person in this firm's employment has the authority to make or give any representation or warranty in respect of the property.

4 North Street, Hornchurch, Essex, RM11 1QX

Tel: 01708 454121 Email: [lettings@alternativepropertyervices.co.uk](mailto:lettings@alternativepropertyervices.co.uk) [www.alternativepropertyervices.co.uk](http://www.alternativepropertyervices.co.uk)